

# Design S9011 / Cardigan in Lace Patterns



**Sizes:** XS (S, M)

Instructions are for smallest size with larger sizes in parentheses. If there is only one number, it applies to all sizes.

**Materials:**

**Schachenmayr Catania**, 500 (500, 550) g kiwi color #00212,

1 Milward circular needle each sizes US 1 and 2 (2 and 2.5mm) 23"/60 cm long,

Blunt yarn needle.

5 buttons from Dill (ref 300964, color #20, 18 mm Durchmesser).

**Border Pattern:**

**Row 1 (RS):** \* knit 2, purl 2; repeat from \*.

**Row 2 (WS):** Knit the knit stitches and purl the purl stitches.

**Lace Patterns:**

Follow the charts 1, 2 and 3 as described in the instructions.

**Eyelet Pattern:**

Worked over a multiple of 8 stitches + 3.

Follow chart 4.

**Gauge:** 24 stitches and 32 rows = 4 x 4"/10 x 10 cm, over lace patterns using size US 2 (2.5 mm) needle.

## INSTRUCTIONS

**Back:** With US 1 (2 mm) needle, cast on 102 (114, 122) stitches and work in Border Pattern, beginning and ending the 1st RS row with knit 2. Work even until piece measures 2"/5 cm = 18 rows, and increase 2 (0, 2) sts on last row = 104 (114, 124) stitches.

Change to US 2 (2.5 mm) needle and work in lace pats as follows: 30 stitches chart 1, 7 (12, 17) stitches chart 2, work 15-stitch repeat of chart 3 twice, 7 (12, 17) stitches chart 2 and 30 stitches chart 1. Continue in pats as established until piece measures 11½"/29 cm above border.

For the armhole shaping, bind off 4 stitches at beginning of next 2 rows, 3 stitches at beginning of next 2 rows, 2 stitches at beginning of next 4 rows and decrease 1 st each side every 2nd row 3 times = 76 (86, 96) stitches. Work even until piece measures 19¼"/49 cm above border.

For the neck and shoulder shaping, bind off the center 18 (22, 26) stitches and working both sides at once, bind off 9 stitches from each neck edge twice.

At the same time, when piece measures 19¼"/50 cm above border, for the shoulder shaping, bind off from each shoulder edge 3 (4, 5) stitches once and 4 (5, 6) stitches twice.

**Right Front:** With US 1 (2 mm) needle, cast on 47 (51, 55) stitches and work in Border Pattern, working the 1st RS row as follows: k3, \*p2, k2; repeat from \* to end. Cont in pat until border measures 2"/5 cm = 18 rows from beginning, and dec 1 st (0, inc 1 st) on last row = 46 (51, 56) sts.

Change to US 2 (2.5 mm) needle and work in lace pats as follows: 9 stitches chart 3, beginning with the 7th stitch of chart, 7 (12, 17) stitches chart 2 and 30 stitches chart 3.

Continue in pats as established until piece measures 11½"/29 cm above border.

For the armhole shaping, work decreases at armhole edge (beginning of WS rows or end of RS rows) same as back = 32 (37, 42) stitches. Work even until piece measures 16½"/42 cm above border.

For the neck shaping, bind off from neck edge (beginning of RS rows) 4 (5, 6) stitches once, 3 (4, 5) stitches once, 3 stitches once, 2 stitches twice, dec 1 st at neck edge (beginning of RS rows) every 2nd row 5 times and every 4th row twice.

At the same time, when piece measures 19¼"/50 cm above border, for the shoulder shaping, bind off from shoulder edge (beginning of WS rows) 3 (4, 5) stitches once and 4 (5, 6) stitches twice.

## Design S9011 / Cardigan in Lace Patterns

**Sleeves:** With US 1 (2 mm) needle, cast on 58 (58, 66) stitches and work in Border Pattern, beginning and ending the 1st RS row with knit 2. Work even until piece measures 2<sup>1</sup>/<sub>5</sub> cm = 18 rows, and increase 1 (1, 3) sts on last WS row = 59 (59, 69) stitches.

Change to US 2 (2.5 mm) needle and work in eyelet pat. For the side shaping, increase 1 stitch each side, working increase stitches into eyelet pat, every 8th row 15 times = 89 (89, 99) stitches. Work even until piece measures 16<sup>1</sup>/<sub>4</sub> cm above border.

For the cap shaping, bind off 2 (2, 3) stitches at beginning of next 10 rows, 2 stitches at beginning of next 2 rows, decrease 1 st each side every 2nd row 12 times and bind off 2 stitches at beginning of next 12 rows.

Bind off remaining 17 stitches loosely.

**Neckband:** With US 1 (2 mm) needles, cast on 144 (164, 172) stitches and work in Border Pattern, beginning and ending the 1st RS row with knit 3.

When piece measures 1<sup>1</sup>/<sub>2</sub> cm, with a length of contrasting yarn, knit one row, or place stitches on a stitch holder. These open stitches will later be sewn to cardigan.

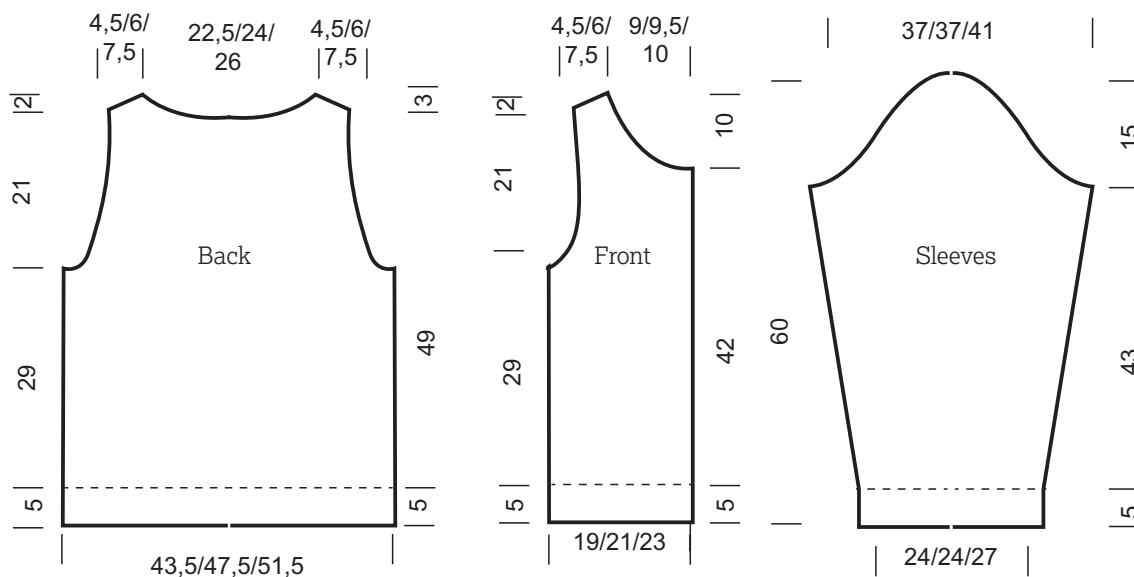
**Left front band:** With US 1 (2 mm) needles, cast on 140 stitches and work in Border Pattern and complete same as neckband.

**Right front band:** Work same as left front band, but on the 6th row, work 5 buttonholes (bind off 2 stitches for each buttonhole) evenly spaced and on the next row, cast on 2 stitches over each set of bound-off stitches. Complete same as left front band.

**Finishing:** Sew shoulder seams. Set in sleeves. Sew side and sleeve seams. Using back stitch, sew on neck and front bands, sewing the open stitches (unravel the contrasting yarn if necessary while sewing) to the right sides of the neck and front edges. Sew on buttons.

Work left front to correspond to right front, reversing all shaping.

# Design S9011 / Cardigan in Lace Patterns



Measurement Table for the Cardigan

Sizes	XS	S	M
<b>Back and Front</b>			
Width at lower edge of back (in)	17	19	20
Width at lower edge of front (in)	7½	8¼	9
Border depth (in)	2	2	2
Length above border to armhole (in)	11½	11½	11½
Armhole depth (in)	8¼	8¼	8¼
Neck depth, Back (in)	1¼	1¼	1¼
Neck depth, Front (in)	4	4	4
Shoulder depth Back and Front (in)	¾	¾	¾
Neck width (in)	8¾	9½	10¼
Shoulder width (in)	1¾	2½	3
Total length (in)	22½	22½	22½
<b>Sleeve</b>			
Width at lower edge (in)	9½	9½	10
Width at upper arm (in)	14½	14½	16
Border depth (in)	2	2	2
Length above border to cap (in)	15¾	15¾	15¾
Cap depth (in)	6	6	6
Total length (in)	23½	23½	23½

# Design S9011 / Cardigan in Lace Patterns

chart 1

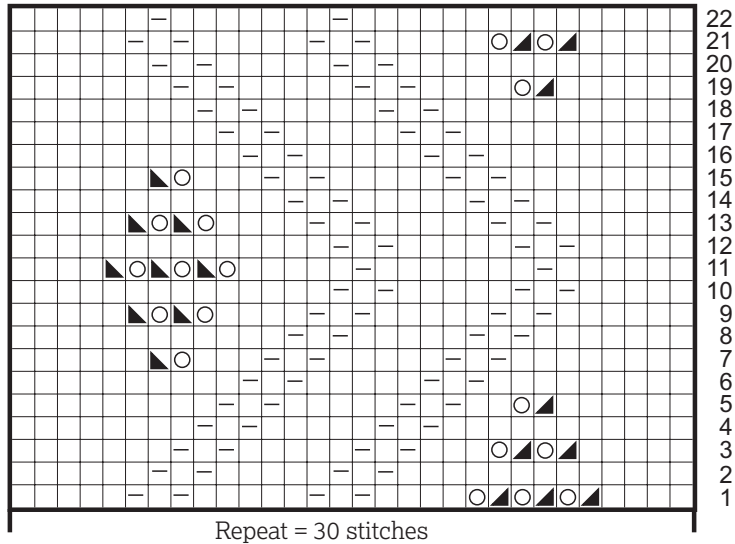


chart 2

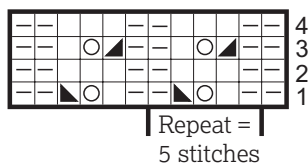


chart 3

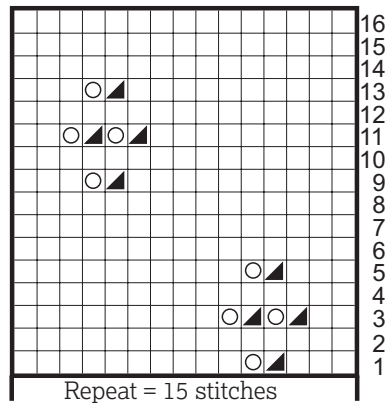
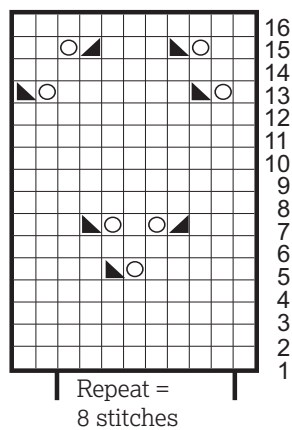







chart 4



**Stitch Key:**

-  = 1 knit stitch
-  = 1 purl stitch
-  = 1 yarn over
-  = knit 2 stitches together
-  = SK2P: slip 1 stitch knitwise, knit 1, pass the slipped stitch over the knit 1.