



S9404

# Ladies' Pullover

[schachenmayr.com](https://www.schachenmayr.com)

Follow us     

MEZ GmbH, 2019. All rights reserved.





S9404

V.2/DL

# Ladies' Pullover

Knit

Intermediate



Design: Schachenmayr Designteam

## SIZES

XS/S/M/L/XL

## MATERIALS

**Schachenmayr Catania**,  
400/400/450/500/550 g in 00253 Jade.

## NEEDLES & TOOLS

Size 2.5 mm needles.  
Size 2.5 mm circular needle, 40 cm long.  
Cable needle [cn].  
Tapestry needle.

## GAUGE

32 sts and 34 rows = 10 x 10 cm in **main pat.**

Take time to check your gauge. If you have too many stitches and rows, switch to larger needles. If you have too few stitches and rows, switch to smaller needles.

## ABBREVIATIONS

beg = begin(ning)  
cn = cable needle  
cont = continue  
inc = increase(ing)  
k = knit  
pat = pattern  
p = purl  
rep = repeat  
RS = right side  
SKP = slip 1 st as if to knit, k1, pass slipped st over knitted st  
sl = slide  
st(s) = stitch(es)  
tog = together  
WS = wrong side  
yo = yarnover

## THE BASICS

**Stockinette:** K on RS, p on WS.

**Reverse stockinette:** P on RS, k on WS.

**Main pattern:** Work according to chart. Chart shows RS rows only; on WS rows, work sts as they appear, purl all yos. Work the 14-st pat rep throughout. Work rows 1 and 2, 34 times, then work rows 3 – 12, 3 times, then work rows 13 and 14 once, then repeat rows 15 and 16 throughout.

## INSTRUCTIONS

Instructions are for smallest size, with changes for larger sizes noted in different colors. When only one figure is given, it applies to all sizes.

### Back

Cast on 94/108/122/136/150 sts. Beg and end with a WS row, work in reverse stockinette for 3 rows. Inc 30 sts evenly across last WS row = 124/138/152/166/180 sts.

Next RS row: Selvage st, work 4 sts in stockinette, work 112/126/140/154/168 sts in main pat according to chart, working the 14-st pat rep 8/9/10/11/12 times, work 2 sts in reverse stockinette, 4 sts in stockinette, selvage st. Work in pat as established until back measures 41 cm from cast-on, ending with a WS row.

**Shape armholes:** Bind off 4 sts at beg of next 4 rows, 3 sts at beg of next 2 rows, 2 sts at beg of next 2/4/4/6/6 rows and 1 st at beg of next 4/4/6/6/8 rows. Work 2 rows even, then bind off 1 st at beg of next 2 rows = 92/102/114/124/136 sts. Cont until armhole measures 15/17/19/21/23cm, ending with a WS row.

**Shape neck:** Bind off center 28/30/32/34/36 sts. Working each side separately, bind off 5 sts at each neck edge once, 3 sts once, 2 sts once and 1 st twice. Bind off remaining 20/24/29/33/38 sts for each shoulder. Back measures 59/61/63/65/67 cm in total length.

### Front

Work same as for back until armhole measures 6/8/10/12/13 cm, ending with a WS row.

**Shapeneck:** Bind off center 24/26/28/30/32 sts. Working each side separately, bind off 3 sts at each neck edge every other row once, 2 sts twice, 1 st 5 times, then bind off 1 st at each neck edge every 4<sup>th</sup> row twice. Cont until front measures same length as back to shoulders, then bind off remaining 20/24/29/33/38 sts for each shoulder. Front measures 59/61/63/65/67 cm in total length.

### Sleeves

Cast on 78/88/92/102/116 sts. Beg and end with a WS row, work in reverse stockinette for 3 rows. Inc 14 sts evenly across last WS row = 92/102/106/116/130 sts.

Next RS row: Selvage st, work 2/0/2/0/0 sts in stockinette; beg with chart row 15, work 84/98/98/112/126 sts in main pat according to chart, working the 14-st pat rep 6/7/7/8/9 times, work 2 sts in reverse stockinette, 2/0/2/0/0 sts in stockinette, selvage st. Work in pat as established until sleeve measures 2/3/4/5/6 cm from cast-on, ending with a WS row.

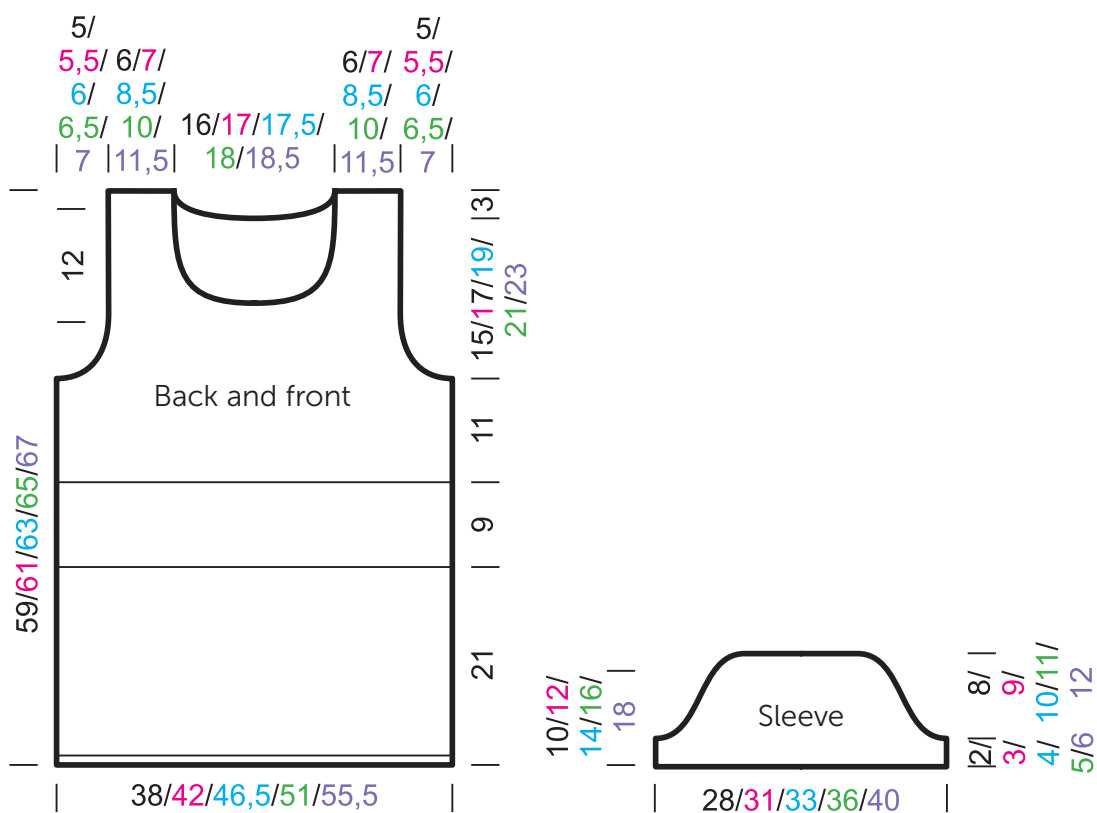
**Shape sleeve cap:** Bind off 4 sts at beg of next 2 rows, 2 sts at beg of next 4 rows, 1 st at beg of next 14/16/20/22/26 rows, 2 sts at beg of next 6 rows and 3 sts at beg of next 2 rows. Bind off remaining 44/52/52/60/70 sts.

## FINISHING

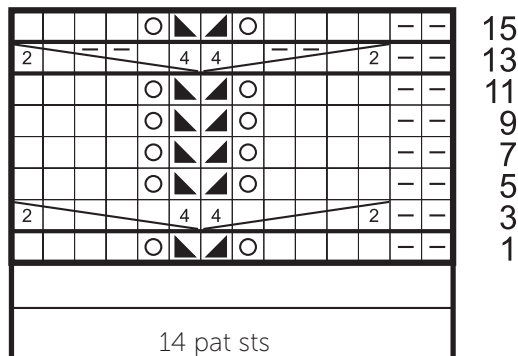
Pin pieces to measurements and block. Sew shoulder seams.

**Neckband:** With circular needle, pick up and knit 126/130/134/138/142 sts around neck edge. Join for working in rnds and purl 5 rnds. Next rnd: Bind off all sts in knit. Sew in sleeves. Sew side and sleeve seams. Carefully weave in all ends.

**Schematic** (measurements are in cm)



**Chart**



**Chart key**

- = k1
- ▢ = p1
- = yo
- ▴ = k2tog
- ▾ = KP: slip 1 st as if to knit, k1, pass slipped st over knitted st
- = sl 2 sts to cn and hold in front of work, k4, then k2 from cn
- = sl 4 sts to cn and hold in back of work, k2, then k4 from cn
- = sl 2 sts to cn and hold in front of work, k2, p2, then k2 from cn
- = sl 4 sts to cn and hold in back of work, k2, then p2, k2 from cn