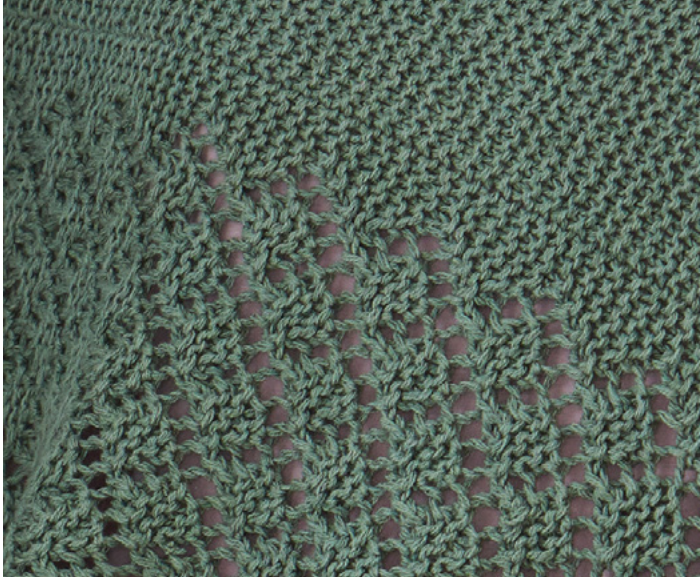




Anabella
poncho

S11010





S11010

V.1/MZ/MD

Anabella poncho

Design: Schachenmayr Designteam



Knit



Easy



Recommended Yarn

SIZE	S/M	M/L
	36-40	42-46
Width	80	85
Total length	50	65

all measurements in cm

MATERIALS

Schachenmayr Aurelie, 50 g ball

Approx. 50 g ≈ 110 m

Col. 00070 (thymian) 9 balls

Yarn amounts are approximate. Make sure to purchase enough of the same dye lot in order to complete your project. The color names refer to the German names on the sleeves. The amount of yarn needed approx. vary from person to person.

Size 3.5 mm circular needle (US size 4), 80 cm long
1 tapestry needle for weaving in ends

GAUGE

Garner stitch, using needle size 3.5 mm:

20 st and 34 rows = 10 x 10 cm

Lace pattern, using needle size 3.5 mm:

20 st and 34 rows = 10 x 10 cm

THE BASICS

Garner stitch:

Knit all rows

Lace pattern:

Number of st multiple of 6 + 9 st.

Work according to the chart. Read RS rows from right to left and WS rows from left to right. The st are shown as they appear at the right side. Begin with the 5 st before the pattern repeat, then repeat the 6 st of the pattern repeat, end with the 4 or 6 st after the pattern repeat.

Repeat R 1 to 12.

INSTRUCTIONS

Instructions are for smallest size, with changes for larger sizes noted in different colors. When only one figure is given, it applies to all sizes.

NOTE: work the poncho in RS and WS rows from left to right, the width will be approx. 50/65 cm and the length 160/170 cm. After the poncho is sewn together does the desired shape emerge.

Poncho

Using Thymian, cast on 100/130 st and work the first row (= RS) as follows: 61/91 s in garter stitch, 39 st in lace pattern, begin with the 5 st before the pattern repeat, work the pattern repeat (= 6 st) 5 times and end with the 4 s after the pattern repeat. At the left edge, a zigzag edge is created because at the end of the row the number of st is variable (4 or 6 st).

After 540/576 rows (= 12th row of the lace pattern) cast off all st.

Total length: approx. 160/170 cm.

FINISHING

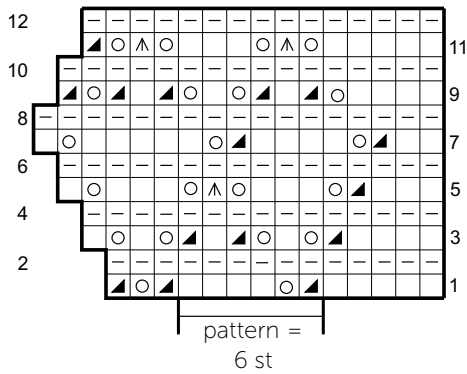
Dampen and block the piece according the measurements; allow to dry.

Fold the work to create a rectangle: 50 x 80 cm/65 x 85 cm. Then join the cast on-edge and the cast off-edge at the garter about 50/55 cm. Leave the remaining 30 cm to the fold line for the neckline (= 60 cm). Weave in all ends.

ABBREVIATIONS

k	= knit
p	= purl
R	= row(s)
RS	= right side
st(s)	= stitch(es)
tog	= together
WS	= wrong side

Chart



Key

- = RS: knit, WS: purl
- ◻ = RS: purl, WS: knit
- = yarnover
- ⏏ = 2skp (slip 2 st knitwise, k1, pass slipped st over)
- ▴ = k2tog

Schematic (measurements are in cm)

